

Supply only products available

Custom made pin boards of any size and your choice of colour based our standard colour range and on availability, for home or office or wherever required

Autex 3D tiles and

Quietspace® 3D Tile is a pre-finished acoustic wall tile designed to create a contemporary interior and open the realms of design flexibility in any interior environment.

Quietspace® 3D Tile is a lightweight semi-rigid tile product that redefines sustainable design and dematerialisation. Quietspace® 3D Tile will create a contemporary and decorative interior whilst helping to reduce reverberated sound, and assist in controlling background noise.

Quietspace® 3D Tile products are made from 100% polyester (which is recyclable) and contain a minimum of 60% post-consumer recycled material (PET bottle-flake).

Quietspace® 3D Tile is a high-density material manufactured from 100% polyester fibres. Quietspace® 3D Tile is therefore completely safe, non-toxic, non-allergenic and non-irritant. Quietspace® 3D Tile is ideally suited for commercial office, education, retail and hospitality.

Key Benefits

- Quietspace® 3D Tile is made from 100% polyester fibre without chemical binders or retardants
- Manufactured using a minimum of 60% already recycled polyester fibre; made from post-consumer waste
- Excellent acoustic performance
- Highly durable providing long-term stability and performance
- Safe, non-toxic, non-irritant and non-allergenic
- Resistant to fading (refer to 'Fastness to Light')
- Light-weight and easy to handle
- Base material is manufactured under ISO 9001 and ISO 14001 certified Quality and Environmental Management Systems

Applications

- Decorative and functional acoustic surface for

commercial, retail, hospitality, education and commercial interiors

– Minimise noise in the interior environment and create unique finishes and features.

– Modular design for ease of installation and demountable allowing your design to evolve with you.

Product Specifications **Product Name** Quietspace® 3D Tile **Style** Blank **Composition** 100% polyester fibre (PET) **Pattern Thickness** 40mm **Tile Dimensions** Standard: 500mm x 500mm **Pack Size** 8 Tiles per box

MOQ MOQ applies. Contact your local Autex Representative.

Installation Fittings

Mounting Clips supplied with tiles - see box for installation instructions.

Fastness to Light

Quietspace® 3D Tiles are suitable for indoor use only. Please discuss your requirements with your Autex Representative.

Fire Ratings

AS1530.3

Spread of Flame Index (0-10) 0

Smoke Developed Index (0-10) 5 Tested 3 October 2007, AWTA (Report Number 7 - 555352-CO)

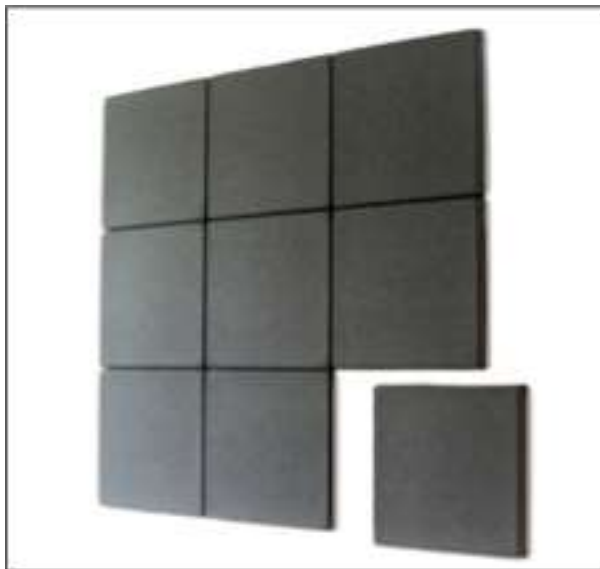
AS/NZS 3837:1998

BCA Classification: GROUP 3

Average Specific Extinction Area: 415.4 m²/Kg Tested 26 April 2007, AWTA (Report Number 7-551954-CO)

3D Tile – Blank





Moisture Absorption

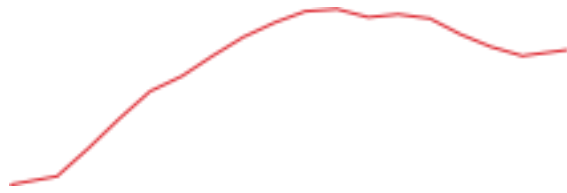
Polyester fibre when exposed to an atmosphere of 50 °C at 90% relative humidity for four days showed moisture absorption of less than 0.03% by weight. Polyester is not affected by moisture, mould or mildew and will not rot or deteriorate in intended use situations.

Environmental

Autex is committed to Quality and Environmental best practice through our ISO 9001 and ISO 14001 certified Quality and Environmental Management Systems. 3D Tile products contain a minimum

of 60% previously recycled polyester fibre (from PET bottle-flake) ensuring comparatively low embodied energy.

Uncontaminated Quietspace® 3D Tiles can be recycled. Quietspace® 3D Tiles



Colour Range

BRILLIANT ORANGE

BARK

Without AAB: 0.75

Sound Absorption Class: Without AAB: C

Service

With AAB: 0.85 With AAB: B



CHARCOAL

CIVIC

SILVER

For further information about Quietspace® 3D Tile or any other Autex products, please contact your local Autex Representative or visit our website.

Quietspace® is a registered trademark of Autex Industries Ltd. Quietspace® 3D Tile is proudly manufactured in New Zealand.

Peel and stick tiles



Complete design freedom with Self Adhesive Tiles

The innovative **Quietspace® Acoustic Fabric Self Adhesive Tiles** provide a fashionable and practical solution whether you're wanting a pin-board or full room acoustic control. Self Adhesive Tiles have all the features and benefits of Quietspace® plus the added "easy DIY use" of a self-adhesive backing.

Multiple uses suited for a diverse range of environments

Self Adhesive Tiles combine Vertiface® fabric with a 10-12mm polyester backing to create a multi-use wall covering with exceptional acoustic properties. Entire walls can be covered with Self Adhesive Tiles and are designed to reduce and manage reverberated (echo) noise. With easy installation options, Self Adhesive Tiles are the ideal choice for the education sector, commercial interiors, offices, theatres, libraries, retail shops, restaurants, cafes and residential applications including kid's bedrooms - anywhere you need a surface that can reduce noise and / or act as a notice board.

SUITABLE APPLICATIONS:

Classrooms Libraries Lecture theatres Entranceways and corridors Music rooms

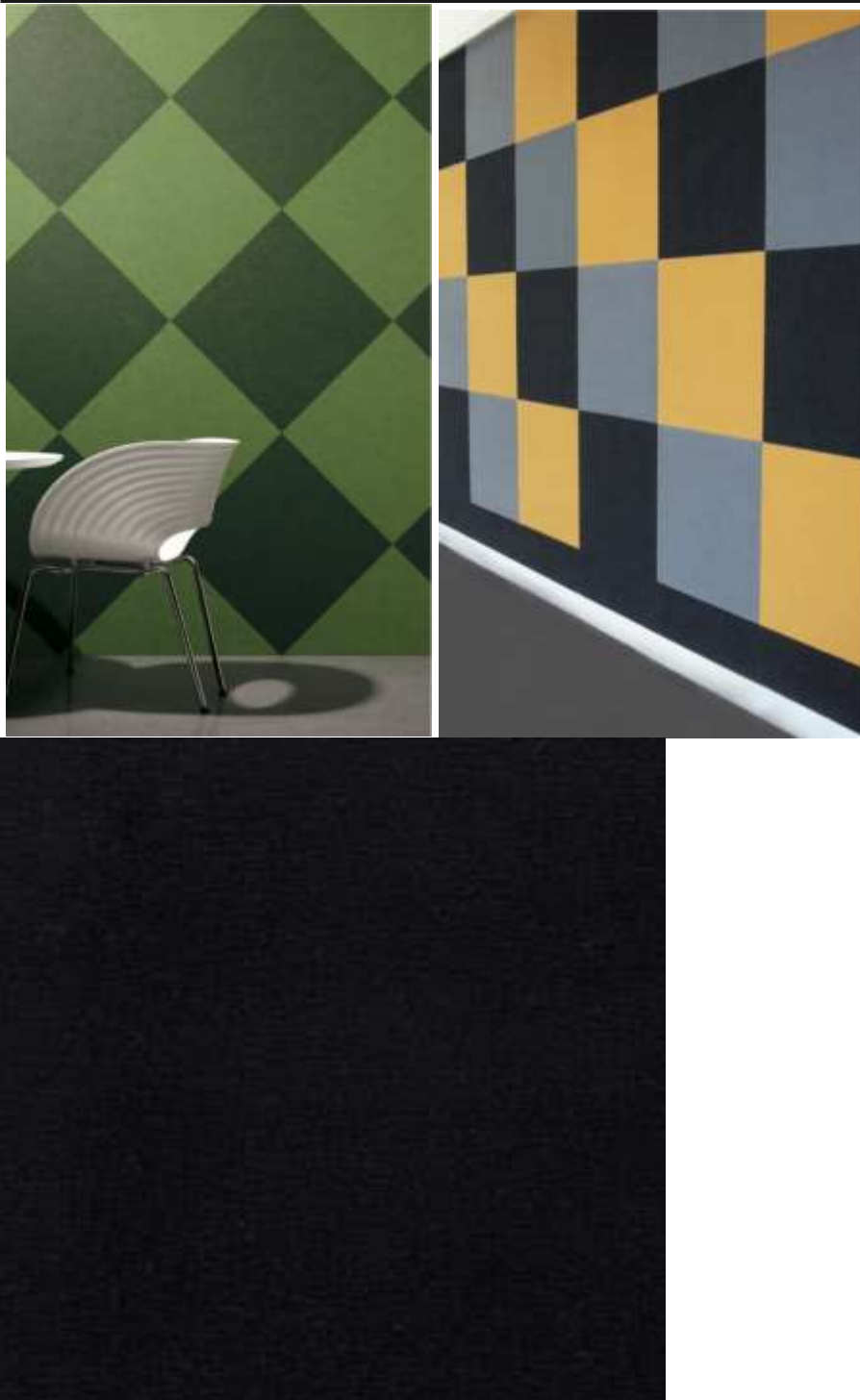
Showrooms Retail fit outs Offices Boardrooms Motor homes Kids bedrooms Home theatres Restaurants, bars and cafes

Reliable features and enduring benefits

Self Adhesive Tiles are made from 100% polyester fibre, which means they are safe, non-toxic and highly resistant to fading. Self Adhesive Tiles are also resistant to stains and moisture, which means they won't rot or break down, providing years of good looks and service.

Easy to install

Self Adhesive Tiles have a self-adhesive backing - just peel and stick! Each pack comes complete with easy to follow instructions.





Self Adhesive Tile Colour Range

Colour choice and complete design freedom

Self Adhesive Tiles come in an extensive range of contemporary colours, offering complete design freedom to complement any decor. Create a subtle checkerboard effect by choosing just one colour and laying them in alternating directions, or mix and match colours to create almost limitless design potential.

Noir

Avocado

Lime

Sanz

Theatre

Chilli Red

Nautilus

Aubergine

Silver

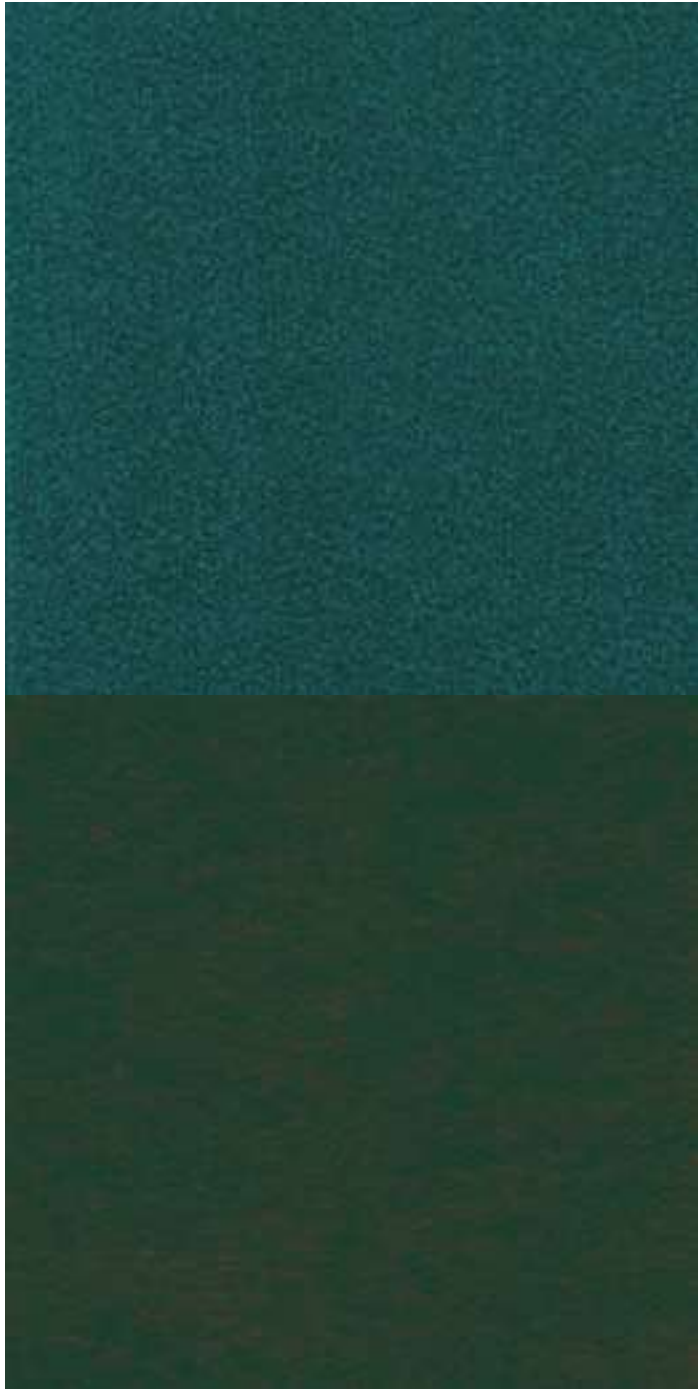
Stately

Lightsout

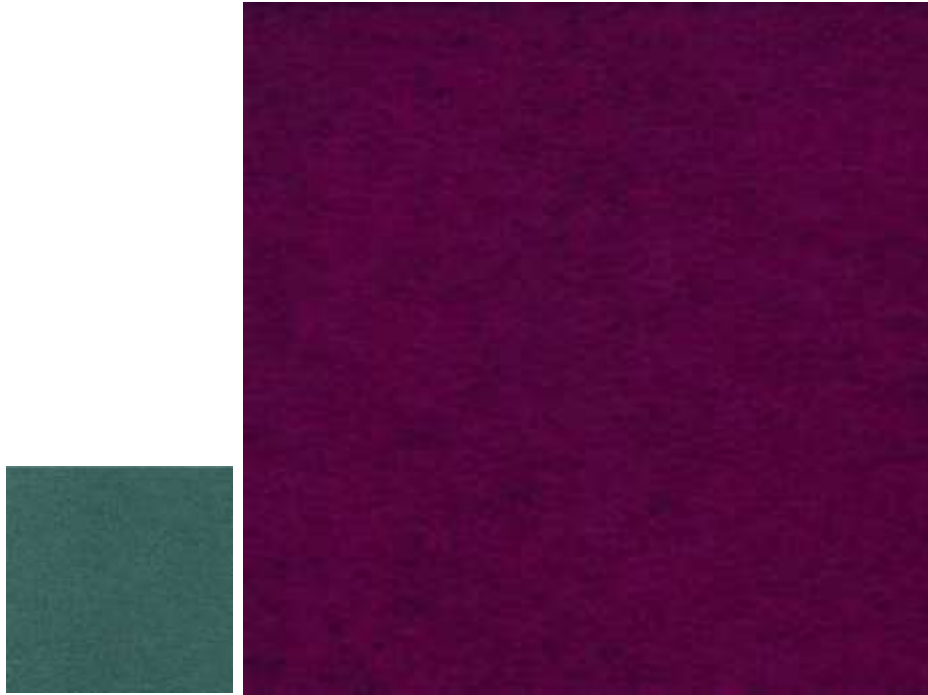
Spearmint











STOCK COLOURS

Other colours are available subject to minimum order quantities. Please refer to the complete range of Vertiface® colours.

Self Adhesive Tiles

product specifications

Description: Self Adhesive Tiles are a multi-use wall covering with exceptional acoustic properties manufactured from 100% polyester fibre, with a pressure sensitive adhesive layer on the back.

Applications: Commercial, retail, residential, education, offices, auditoriums and theatres

Fibre: 100% polyester fibre Total Nominal Thickness: Typically 10-12mm Tile Size: 600mm x 600mm Tiles per Pack: 6 Coverage: 2.16m² UV Stabilised: Please refer to the relevant warranty sheet. Moisture Absorption: 0.006% - will not rot or smell Fire Ratings:

AS1530 Part 3 Spread of Flame (Index 1-10) 0 Smoke Developed (Index 0-10) 5 - Tested April 2002, CSIRO

AS/NZS 3837:1998

AS ISO 9705 - 2003 Classification: Group 1(SMOGRARC): <100m²/s² Tested 21 May 2012, BRANZ (FI 4894)

Acoustics: Acoustic Fabric has been tested to a Noise Reduction Coefficient (NRC) rating of 0.4 and will typically reduce reverberated noise by 40%

Care and Maintenance: Ask your local distributor for an Autex Wall Coverings Care and Maintenance brochure, or download a copy from our website.

Installation: Installation instructions are included in every pack of tiles, or ask your local distributor for an Autex Wall Coverings Installation sheet, or download a copy from our website.

Quality Standards: Autex is committed to Quality and Environmental best practice through our ISO 9001 and ISO 14001 certified Quality and Environmental Management Systems.

General: Test result certificates are available upon request. For further information about our complete range of quality fabric wall coverings, contact your local distributor or visit our website.

Quietspace® is a registered trademark of Autex Industries Ltd. Autex reserves the right to change specifications without prior notice.